



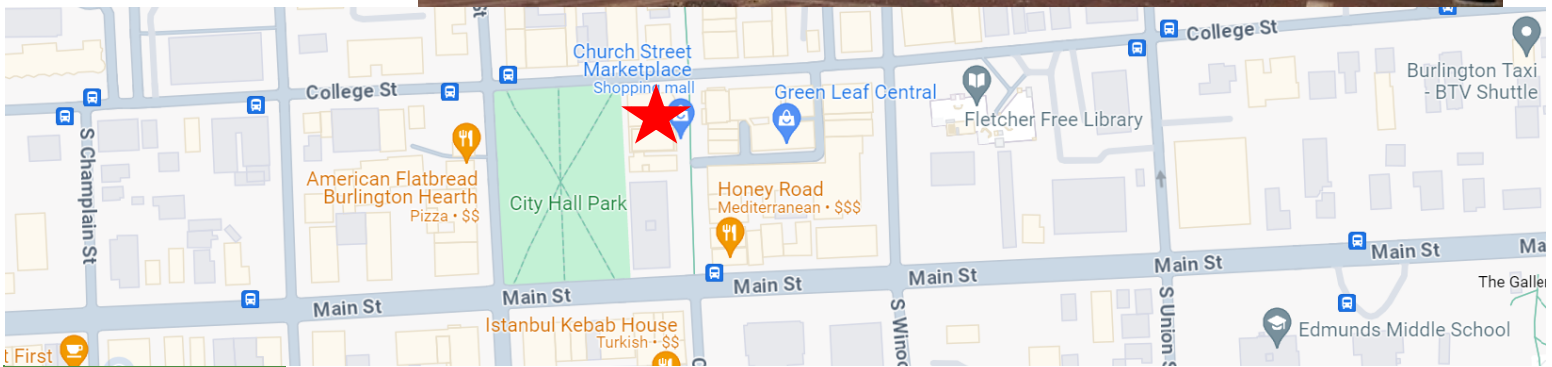
DONAHUE ASSOCIATES
COMMERCIAL REAL ESTATE ADVISORS

802-862-6880

www.donahueassociatesvt.com

**FOR LEASE/
OFFICE SPACE**

131 Church Street,
Burlington, VT 05401



SUMMARY

Available Suites—

2nd Floor:

Suite 201-205: 1,017 RSF 3 Private offices and shared space \$23/SF modified gross with flexible lease terms.

Overview— Potential to lease spaces with views overlooking Church Street Marketplace.

Easy access off Burlington's award winning brick market with shops and activities steps away. This historic brick building in the heart of downtown is the perfect location for your company. Spaces offer great natural light, a mix of private offices and open space.

Lease Prices— Utilities included

Parking: www.ParkBurlington.com

Zoning: FD6 - Downtown Core. Approved uses include, but are not limited to, office general/medical, retail service and sales.



CONTACT US



Steve Donahue

Steve@donahueassociatesvt.com

802-862-6880

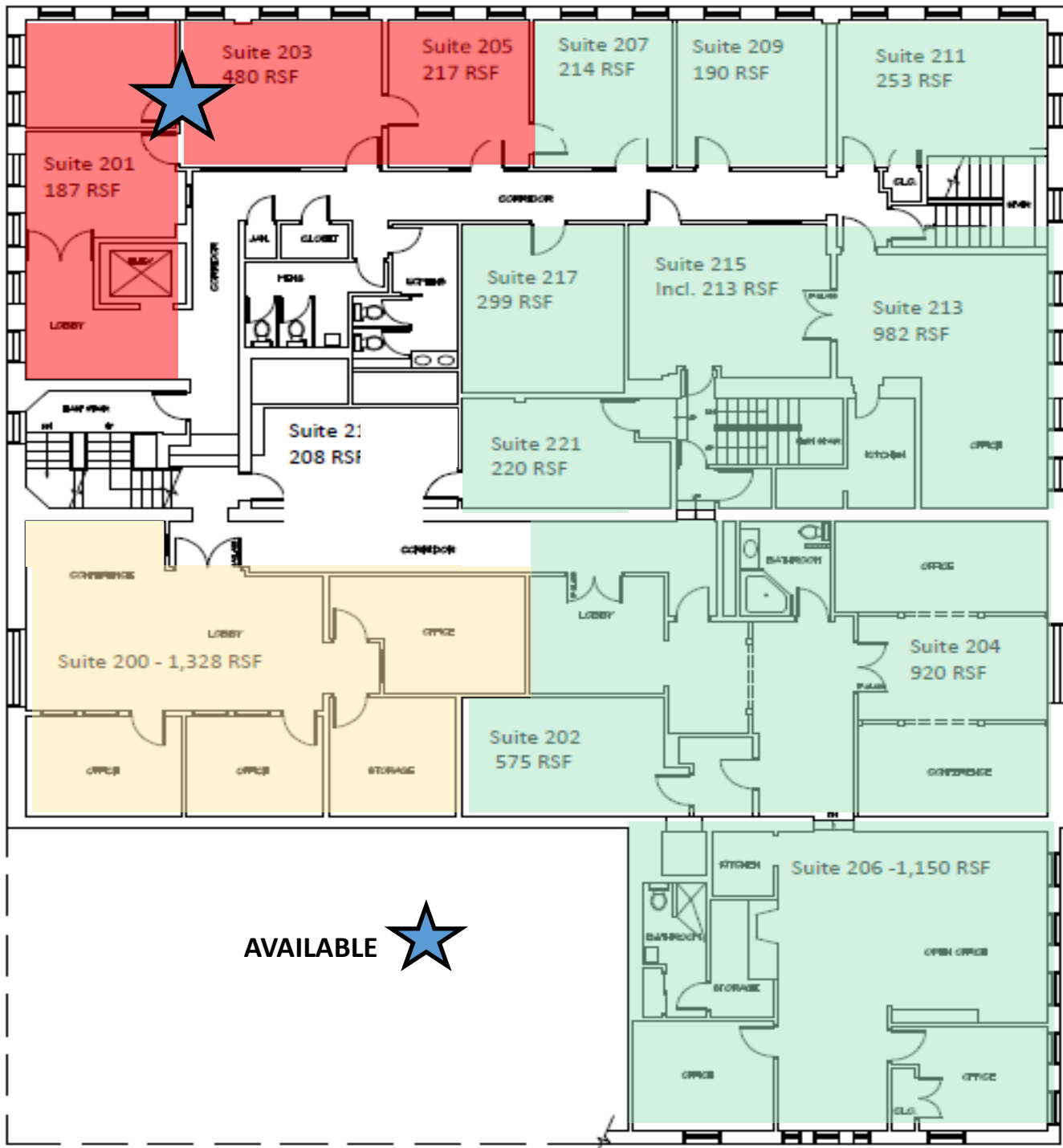


DONAHUE ASSOCIATES
COMMERCIAL REAL ESTATE ADVISORS

FOR LEASE/ OFFICE SPACE

131 Church Street, Burlington, VT

FLOOR PLAN—2nd Floor





FOR LEASE/ OFFICE SPACE 131 Church Street, Burlington, VT

Suite 200-PHOTOS





DONAHUE ASSOCIATES
COMMERCIAL REAL ESTATE ADVISORS

FOR LEASE/ OFFICE SPACE 131 Church Street, Burlington, VT

MAP



The data contained herein is for informational purposes only and is not represented to be error free. We have made every effort to obtain information regarding listings from sources deemed reliable. However, we cannot warrant the complete accuracy thereof subject to errors, omissions, change of price, rental or other conditions, prior sale, lease or financing, or withdrawal without notice. Notwithstanding, any attachments of scanned and signed documents to the contrary, nothing contained herein constitutes nor is intended to constitute an offer, inducement, promise, or contract of any kind. Only signed documents are adequate to enter into a contract, or to modify, amend, change or provide any required notice to a previously signed contract.



FOR LEASE/ OFFICE SPACE 131 Church Street, Burlington, VT

PHOTOS—3rd Floor

